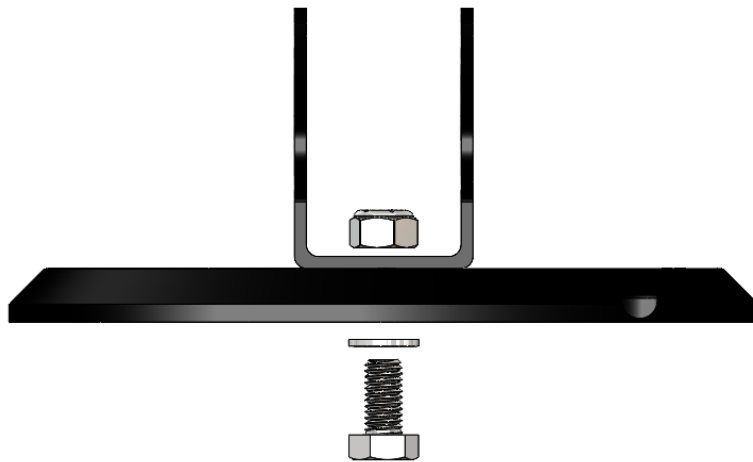


LED Light Bar and Mount

Parts Included:

- **Light Bar and Mount:**
 - 6.5" LED Light Bar and Bracket
 - Light Bar Mount
 - Solder Seal Electrical Connectors
 - Stainless Steel Mounting Hardware
- **Mount Only:**
 - Light Bar Mount only. No hardware is provided.

Hardware Orientation:

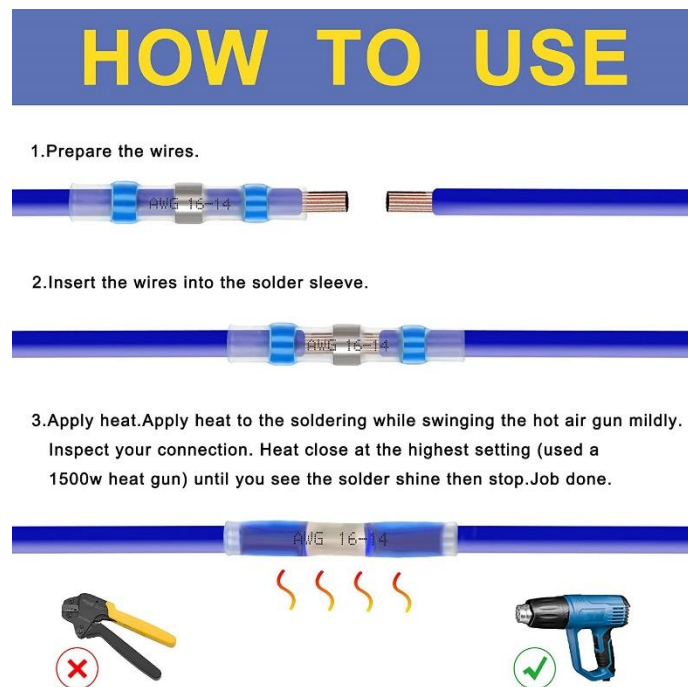


General Notes:

- It is recommended to silicone seal the backside, or perimeter, of the light bar mount.
 - Backside: Prior to fastening the Light Bar Mount (Step 5).
 - Perimeter: After installation is completed.
 - Best Practice: Leave a small spot without silicone in the bottom center to allow egress of any water intrusion.
- Use caution not to overtighten the mounting screws.

Installation Instructions:

1. If applicable, remove the existing light and any old silicone. No hardware or electrical connectors will be reused.
2. Mount the Light Bar Bracket to the Light Bar Mount using the large bolt, washer and locknut.
 - NOTE: The access hole for the light bar's power wire faces down to prevent water intrusion.
3. Remove the silver wire label and feed the LED Light Bar power wire through the hole in the bottom of the Light Bar Mount.
 - NOTE: The LED Light Bar will hang loose until Step 6.
4. Using the solder-seal connectors, connect the Led Light Bar wiring to the power source.
 - NOTE: Typical RV wiring colors: Black is Positive, White is Negative.



5. Fasten the Light Bar Mount using the (4) Self Tapping Screws.
6. Fasten the LED Light Bar to the Light Bar Bracket using the (4) small bolts, flat washers, and lock washers. Adjust angle of light as needed prior to fully tightening the bolts.